



# EasyRoller

Pool & Spa





## The unique story of EasyRoller

EasyRoller is a wheelchair containing no metal parts, and is therefore the best choice in people screening and in environments where metal is prohibited. EasyRoller is made of environmentally friendly recyclable materials with no detachable parts.

EasyRoller is unique in its ergonomic design and will provide both the user and the assistants with an easier and more comfortable transport.

EasyRoller represents a new era in security screening.

### For security screening

EasyRoller does not generate any signal in metal detectors, and is therefore most suitable for screening disabled persons and persons with reduced mobility.

### For swimming pool institutions

The users can easily and comfortably take the wheelchair into the swimming pool and the product will resist the chlorine in the water.

### For hospitals

Patients can easily be moved through the entire hospital and all the way through the MRI-room without interfering with the MRI equipment.



Traditional wheelchair



ER1



Hemnesberget

## The History of EasyRoller

### Year 2000

The development of EasyRoller 1 started up in Hemnesberget.

### Year 2001

EasyRoller 1 was introduced to the market - and the first units were sold.

### Year 2006

EasyRoller 1 and The entrepreneur Torbjørn Skjæran joined the TV show "Creator - TV2 Skaperen". Volume production and marketing were fully organised and planning of EasyRoller 2 started.

### Year 2009

EasyRoller reorganisation, -established new finance, -established an international market organization.

### - And last but not least

Developing the next generation: EASYROLLER 2

## References

**Through the years, a few hundred EasyRoller 1 wheelchairs have been sold to this list of customers**

**Airports in Norway:** Bodø Airport, Harstad/Narvik Airport, and all regional airports

**International airport:** Keflavik Int. Airport, Island

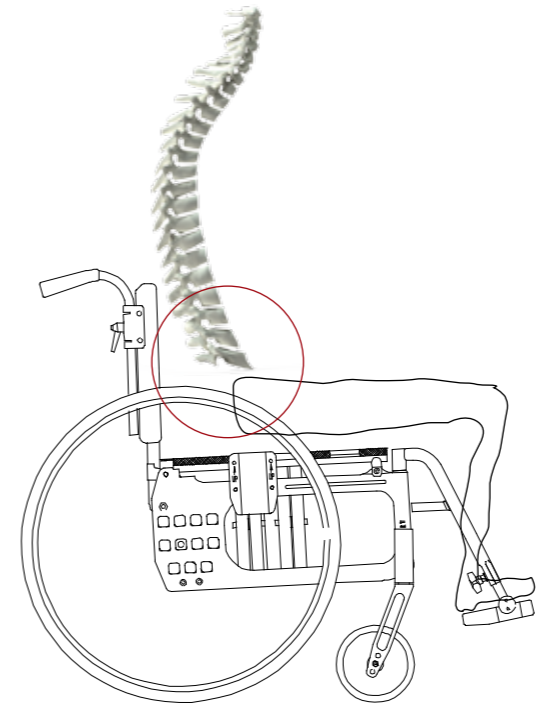
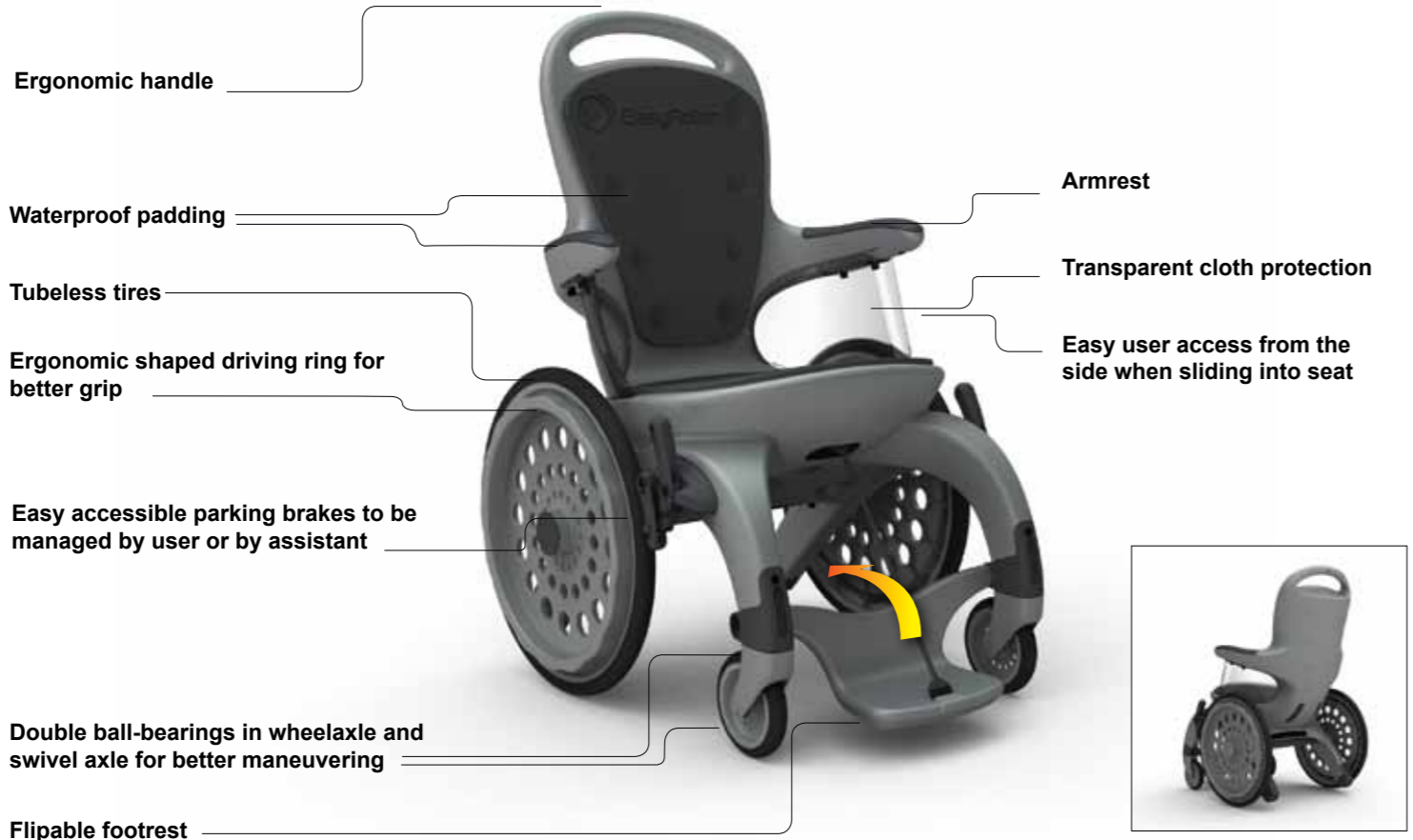
**Health sector:** Most of the institutions using MRI in Scandinavia

**Swimming pool:** Most of swimming pools with access ramps in Norway and Denmark

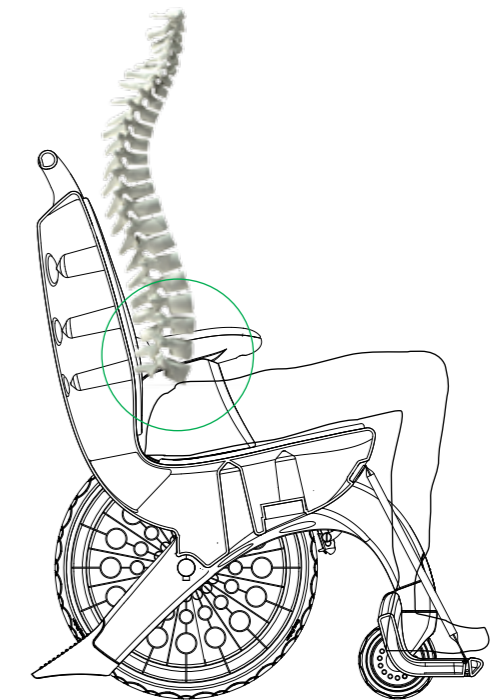


# Ergonomic

ER2 is developed for people with reduced mobility as well as for their assistants. Ergonomic is the science of designing user interaction with equipment and workplaces to fit the user, and to seek to adapt physical form and function to the human demands and requirements. This is the background for focusing on solutions and adjustments which together will give an adequate function combined with good comfort and safety.



Traditional wheelchair



Easy Roller2

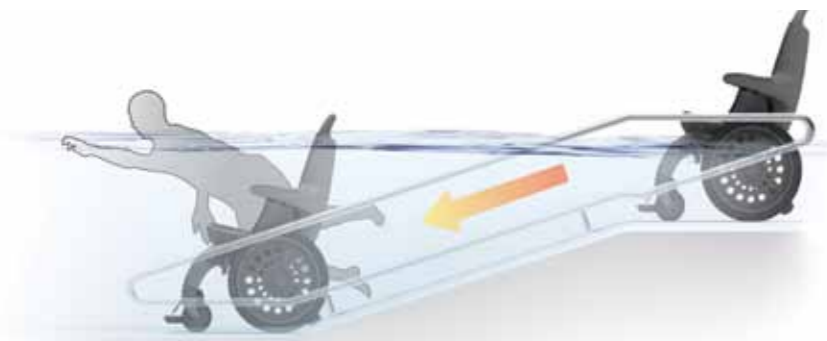
## SCULPTING AND PADDING OF THE SEAT

When sitting, the main part of the bodyweight is transferred to the seat. Some weight is also transferred to the floor, back rest, and armrests, as weight transfer is the key to good seat design. The lumbar (bottom five vertebrae in the spine) needs to be supported to decrease disc pressure. When provided with both a seat back that inclines backwards and has a lumbar support, the body position creates a so called "unbalanced" way of sitting. This is a way of sitting where the back rest takes up the weight of the upper body as well as the physiological curves of the spine, which is critical to prevent excessive lower back pressures. Most people experience this as comfortable and safe, and prevents the person to slide forward.



## EasyRoller 2

Easy Roller Pool & SPA (ER2P) is a manual wheelchair made from 100% thermoplastic which is friendly to the environment. The wheelchair is especially designed for use in swimming pool and SPA.



Normal wheelchairs contain metal which will be ruined by the chlorinated water in swimming pools. Easy Roller Pool is the first metal free wheelchair specially designed for swimming pools and SPA, and frame and wheel bearings will therefore not rust. Ceramic tiles will not be ruined by the rust water.

The frame of the wheelchair has a hole which rapidly fills the frame with water, making pool access easy. By driving up from the pool, the frame will empty rapidly. A pool weight will give even better stability for the chair at the bottom of the pool.

Easy Roller Pool has no parts that can be removed and it demands very little maintenance. The wheelchair also has good quality when it comes to driving and turning.

## EasyRoller 2 leaves no doubt!

### Functions & equipment

#### Standard

Parking brakes - tilting security - clothes protection - footrest - driving handles.

Easy Roller is tested and approved due to international standards and directives for manual wheelchairs.

### Technical data EasyRoller Pool & Spa (ER2)

**Material:** Environmentally friendly thermoplastic.

Person weight max 150 kg/300 lbm.

Product	Chair			Seat			Weight	Pool weight
	Width	Depth	Height	Width	Depth	Height		
ER2	67 cm	82,5 cm	105 cm	50 cm	42 cm	52 cm	17 kg	3 kg
ER2	26 in	33 in	42 in	20 in	17 in	21 in	34 lbm	6 lbm

The Easyroller Wheelchair has been tested and approved in accordance with EN 12183:2009 including ISO 7176-1, ISO 7176-8 and EN 12183:199 7,6. It has also been approved in accordance with ISO 7176-5 and ISO 7176-7

## Major benefits

- Easy transfer through changing room, shower and into the pool.
- "Soft shapes" that prevent sore areas on naked skin.
- No loose parts floating around in the water.
- Comfortable ride on rough surfaces.
- When used in water the frames will fill up with water, and the water will automatically drain out when exiting the pool. No water is being left inside the chair, which prevents the risk of developing dangerous infections like legionella.
- The chair can also be used in saunas.





## Product info

- No metal parts
- No loose parts
- Recyclable plastic
- Wide and comfortable seat area
- Ergonomic form developed in therapeutic professional environment
- Aesthetic design, not an institutional look
- High comfort and stability
- Easy maintenance
- Easy maneuvering
- Approved for users of up to 180 kg
- Approved according to standard EN12183 and ISO 7176

## Product Data

### Materials

- Rotomolded PE on Body and footrest
- PU tubeless tires
- Nylon rims
- Nylon brake system
- POM bearings
- EVA water resistant padding

### Dimensions

67x82,5x105cm (Width x length x height)  
Weight: 17Kg



# EasyRoller 2

The no. 1 choice for pool and Spa

## User - friendly

EasyRoller 2 has a unique design based on timeless furniture design. It has an overall soft shape to protect the user on all human contact areas.

EasyRoller is designed to fulfil the ergonomic requirements for disabled persons and persons with reduced mobility, and is most suitable for people screening.



100% thermoplastic  
Ready to GO  
Use anywhere  
No loose parts  
No metal components



## EasyRoller 2 Development Team and Process



100% thermoplastic  
Ready to GO  
Use anywhere  
No loose parts  
No signals in  
metal detectors



Company:

EasyRoller AS  
Sorlandsveien 50  
NO-8640 Hemnesberget  
[www.easyroller.no](http://www.easyroller.no)

Sales Department:

[nils.eirik.jevne@easyroller.no](mailto:nils.eirik.jevne@easyroller.no)  
Ph: + 47 948 35 571

Made in Norway 